

**RATINGS OF MANGANESE DIOXIDE LITHIUM BATTERY**

**(TYPE: CR2025)**

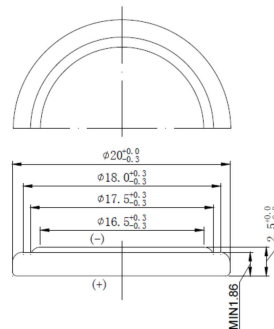
<i>CLASSIFICATION</i>		<i>MANGANESE DIOXIDE LITHIUM PRIMARY BATTERY</i>
<i>BATTERY SYSTEM</i>		<i>COIN TYPE MANGANESE DIOXIDE LITHIUM BATTERY</i>
<i>BATTERY TYPE</i>		CR2025
<i>NOMINAL VOLTAGE</i>		3.0V
<i>NOMINAL CAPACITY</i>		160mAh (ON CONTINUOUS DISCHARGE UNDER 15K Ω load to 2.0V end-point)
<i>STANDARD DISCHARGE CURRENT</i>		0.2mA
<i>MASS</i>		APPROX. 2.7g
<i>TERMINALS</i>	<i>CAP TERMINAL CASE TERMINAL</i>	SUS430+Ni-Plated SUS430+Ni-Plated
<i>OUTER DIMENSIONS</i>	<i>DIAMETER OVERALL HEIGHT</i>	φ 20.0(+0/-0.3)mm 2.5(+0/-0.3)mm
<i>USABLE TEMPERATURE RANGE</i>		-20 °C ~ +70 °C
<i>STORAGE TEMPERATURE RANGE</i>		0 °C ~ 30 °C
<i>STORAGE HUMIDITY RANGE</i>		40% ~ 75%

The Appearance Of CR2025

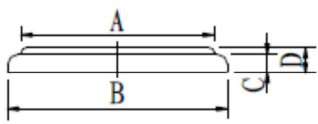


The Dimensions Of CR2025

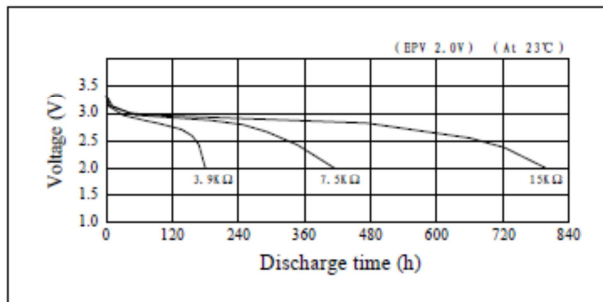
Fig.1



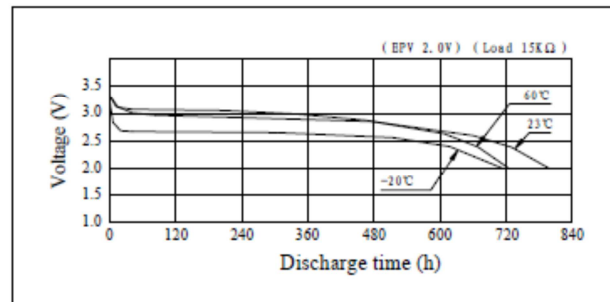
## Specifications

Nominal Voltage	3V	<p style="text-align: center;">Dimensions (mm)</p> 	A	$\phi 17.5$
Nominal Capacity	160 (mAh)		B	$\phi 20.0^{+0.0}_{-0.3}$
Continuous standard load	15 (K $\Omega$ )		C	1.86 (Ref.)
Operating temperature	-20 ~ 70 $^{\circ}$ C		D	$2.5^{+0.0}_{-0.3}$
Weight	2.7 (g)			

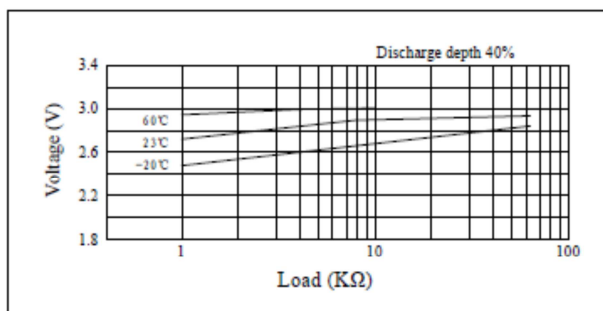
### Discharge characteristics



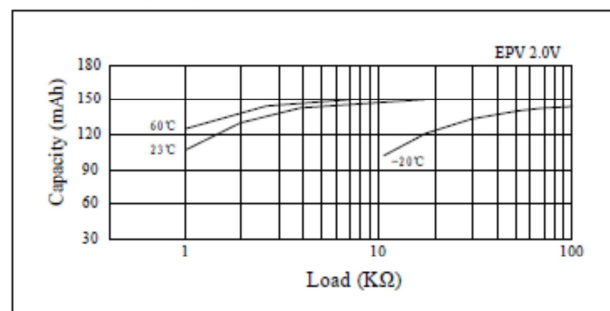
### Temperature characteristics



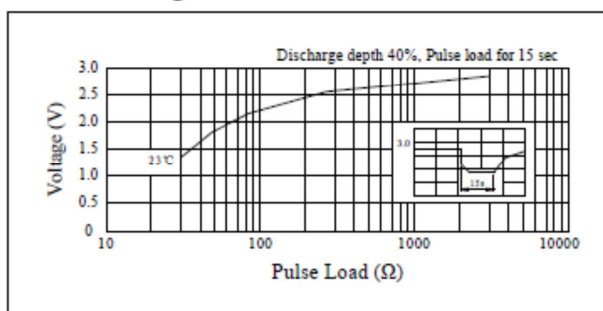
### Load vs. Operating voltage



### Load vs. Capacity



### Pulse discharge characteristics



### Storage characteristics

